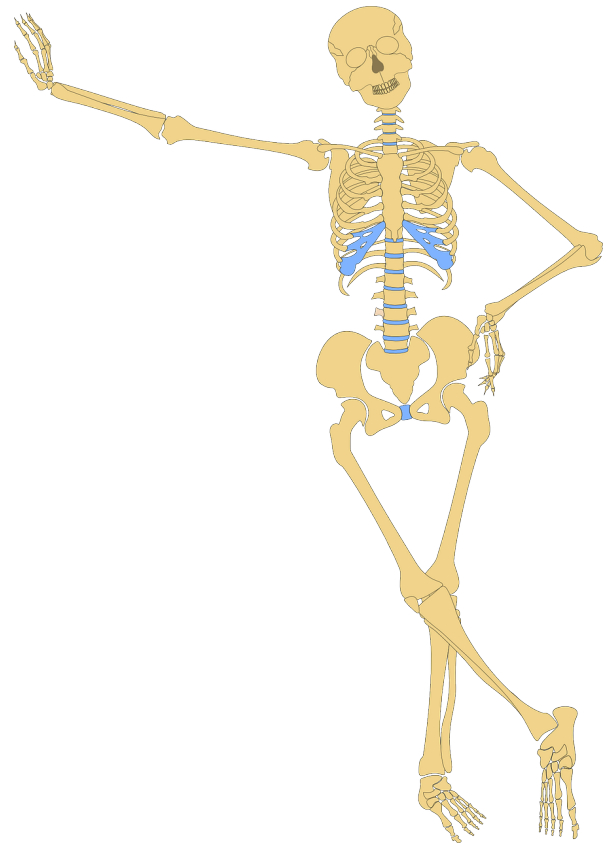


## PRE-CLINICAL SCIENCES

Biochemistry – QT  
Biophysics – QT  
Clinical pathology - QY  
Embriology – QS  
Genetics - QZ  
Histology - QS  
Human anatomy – QS  
Immunology - QW  
Microbiology – QW  
Onkology – QZ  
Parasitology- QX  
Pathology- QZ  
Pharmacology - QV  
Physiology – QT



## MEDICINE AND RELATED FIELDS

Circulatory system – WG  
Dentistry, maxillofacial surgery – WU  
Dermatology – WR  
Dietetics – WB  
Digestive system – WI  
Endocrinology – WK  
Genitourinary system – WJ  
Geriatrics – WT  
Gynecology – WP  
Hematopoietic and lymphatic system – WH  
History of medicine - WZ  
Hospitals, healthcare facilities – WX  
Infectious diseases – WC



Medical professions – W

Nursing – WY

Obstetrics – WQ

Ophthalmology– WW

Otolaryngology– WV

Pediatrics – WS

Practical medicine – WB

Psychiatry – WM

Public health – WA

Radiology, diagnostic imaging – WN

Respiratory system – WE

Surgery– WO

Systemic and metabolic disorders and selected injuries of environmental origin –  
WD

The endocrine system – WK

The musculoskeletal system – WE

The nervous system – WL

# PRE-CLINICAL SCIENCES



## BIOCHEMISTRY QU

Carbohydrates. Lipids QU 75-99

Cells and genetics QU 300-550

- Cells QU 300-400
- Cytophysiology QU 375
- Genetics QU 450-550

Enzymes QU 135-144

Human biochemistry. Metabolism QU 100-133

Information and general publications QU 1-54

Proteins. Amino acids. Peptides QU 55-70

Vitamins QU 145-220



## CLINICAL PATHOLOGY QY

Blood. Blood chemistry QY 400 - 490

Diagnostic tests QY 120 - 350

General and informative publications QY 1 - 39

Laboratory animals. Laboratory techniques QY 50 - 110



## **HUMAN ANATOMY QS**

Anatomy QS 1 – 132

Embriology QS 604 – 681

Histology QS 504 – 539



## **MICROBIOLOGY, IMMUNOLOGY QW**

Immunology QW 501-949

- Atigens and antibodies. Toxins and antitoxins QW 570-630.5
- Immune response QW 640-730
- Immunotherapy and hypersensitivity QW 800-949
- Information publications. Immunology in general QW 501-540
- Types of immunity QW 541-568

Microbiology QW 1-300

- Bacteria QW 115-155
- Biological warfare QW 300
- Environmental microbiology QW 55-85
- Fungi. Bacterial spores QW 180-190
- General and informative publications QW 1-52
- Viruses QW 160-170



## **PARASITOLOGY QX**

Arthropods QX 460-483

General and informative publications QX 1-45

Insects. Other parasites QX 500-675

Parasitic worms. Annelids QX 200-451

Protozoa QX 50-195



## **PATHOLOGY QZ**

General and informative publications QZ 1 – 39

Pathogenesis. Etiology QZ 40 – 109

Symptoms of diseases QZ 140 – 190

Tumors in general. Cysts in general QZ 200 – 380



## **PHARMACOLOGY QV**

Agents acting on the central nervous system. General, local and ductal anesthetics  
QV 76-115

Agents acting on the circulatory system. Agents regulating the excretion of water.

Diuretics. Antidiuretics QV 150-160

Agents acting on the autonomic (vegetative) nervous system. Non-metallic elements and their compounds (pharmacology). Agents acting on neuromuscular connections QV 120-140

Agents affecting fertility, controlling reproduction QV 170-177

Antibacterial agents. Tissue extracts QV 350-370

Anti-inflammatory agents. Anti-infectives agents QV 247-269

Dermatological agents. Gastroenterological agents QV 60-75

General and informative publications QV 1-55

Heavy metals. Gases QV 290-318

Hematological agents QV 180-195

Pharmacy and drugs QV 701-737

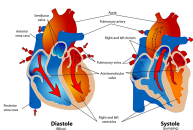
- Drug standardization. Pharmacognosy. Medical plants QV 738-772
- Pharmaceutical processes. Packing. Drug information QV 773-835
- Pharmacy and drugs in general QV 701-737

Topical disinfectants. Dyes. Tar QV 220-243

Toxicology QV 600-667

- Inorganic poisons QV 610-618
- Organic poisons QV 627-633
- Toxic gases. Chemicals QV 662-667
- Toxicology in general QV 600-607

Water. Electrolytes QV 270-285



## **PHYSIOLOGY QT**

General and informative publications QT 1-33.1

Human physiology QT 104-172

Leisure or recreational activities. Sport. Sports medicine QT 250-275

Physic. Mathematics. Engineering QT 34-37.5

Physiology. Hygiene QT 180-245

# MEDICINE AND RELATED FIELDS



## **BLOOD AND LYMPHATIC SYSTEM WH**

Blood diseases. Immune factor. Blood banks WH 120-540

Lymphatic system WH 600-700

General and informative publications WH 1-100



## **CIRCULATORY SYSTEM WG**

Blood vessels. Blood vessel diseases WG 500-700

- Blood vessels (general) WG 500
- Arteries WG 510-595
- Veins. Capillaries WG 600-700

Cardiovascular disease. Diagnostics and treatment WG 120-170

General and informative publications WG 1-113

Heart. Heart diseases WG 200-460



## **DENTISTRY. MAXIDURAL SURGERY WU**

Anatomy. Physiology. Hygiene WU 100-113.7

Dental anatomy. Diseases WU 210-290

Dental chemistry and materials WU 170-190

Dental prosthetics WU 500-530

Dentistry WU 300-360

Dentistry of different groups of patients WU 460-490

Diseases. Injuries. Dental technique. Treatment WU 140-166

Ethics. Practice and staff. Documentation WU 50-95

General and informative publications WU 1-49

Oral surgery WU 600-640

Orthodontics WU 400-440



## **DERMATOLOGY WR**

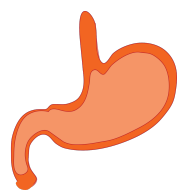
General and informative publications WR 1-105

Skin appendages WR 390-475

Skin diseases WR 140-340

Parasitic skin diseases WR 345-375

Tumors. Sores. Occupational dermatitis. Treatment WR 500-660



## **DIGESTIVE SYSTEM WI**

Abdomen. Abdominal surgery WI 900-970

Information and general publications WI 1-150

Intestines WI 400-575

- Intestines (general) WI 400-480
- Peritoneum WI 575
- Small intestine WI 500-512
- The large intestine WI 520-560

Liver. Bile ducts WI 700-780

Pancreas WI 800-830





Treatment WP 650 – 660

Uterus. Cervix WP 400 – 480

- Diseases of the uterus WP 440 – 465
- Publications in general WP 400
- Cervix. Diseases WP 470 - 480

Menopause. Sexual disorders WP 580 – 610

Fertility. Sterility WP 565 – 570

Nipple WP 800 – 910

- Diseases of the nipples. Tumors WP 840 – 870
- Treatment. Surgery WP 900 – 910
- Nipple (in general) WP 800 – 825

Information and general publications WP 1 – 100



## **HISTORY OF MEDICINE WZ**

Americana WZ 270

Biographies WZ 100–150

History by time periods, locations etc. WZ 51–80.5

Manuscripts WZ 220–225

Miscellany relating to medicine WZ 305-350

New editions and commentaries on old prints WZ 290–294

Old prints WZ 230–260

Information and general publications WZ 1–40



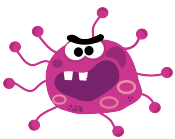
## **HOSPITALS AND OTHER SOCIAL CARE FACILITIES WX**

Clinical departments and units WX 200-225

General and informative publications WX 1-100

Hospital administration WX 150-190

Project and architectural objects. Hardware and equipment WX 100-147



## **INFECTIOUS DISEASES WC**

AIDS. HIV infection WC 503 – 503.7

- Infections with RNA viruses WC 501 – 520
- Infectious mononucleosis. Arbovirus infections WC 522 – 532
- Respirovirus infections WC 505 – 520
- Viral diseases in general WC 500
- Viral hemorrhagic fevers. Other viral diseases WC 534 – 556
- Viral skin diseases WC 570 – 593

Fungal infections WC 450 – 475

General and informative publications WC 1 – 100

Infections. Bacterial infections WC 195 – 425

- Bacterial infections WC 200 – 255
- Enterobacterial infection WC 260 – 290
- Infections WC 195
- Other bacterial infections. Bacterial zoonotic infections WC 302 – 425

Rickettsia bacterial infections. Chlamydia infections WC 600 - 660

Sexually transmitted diseases WC 140 – 185

Tropical and parasitic diseases WC 680 - 950

Viral diseases WC 500 – 593



## **MEDICAL PROFESSIONS W**

Biomedical technology W 82-83.1

Forensic Sciences W 601-925

- Disability assessment. Compensation W 900-925
- Information and general publications W 601-750
- Medical-legal research W 775-867

General and informative publications W 1-28

Healthcare. Patent rights protection W 84-85.5

Law. Ethics. Staff-patient relationships W 32-64

Medical social care W 322-3223

Planning of medical, dental and pharmaceutical care W 100-275

Professional practice W 87-96

The economics of medical care W 74-80



## **MUSCULOSKELETAL SYSTEM WE**

Back WE 720-755

Bones WE 200-259

General and informative publications WE 1-141

Head and trunk WE 700-715

Joints WE 300-400

Limbs WE 800-886

- Limbs in general WE 800
- Lower limbs WE 805-835
- Upper limbs WE 850-886

Muscles and tendons WE 500-600

Orthopedics. Reconstructions. Bone grafts WE 168-190

Pediatrics WE 890



## **NURSING WY**

Economy. Ethics. Philosophy. Psychological aspects WY 77-87

Information publications WY 1-49

Nursing care of different groups WY 150-164

Other services WY 191

- By country WY 300

Refferals. Nursing care. Assessment and supervision WY 90-100.5

Specialization in Nursing WY 101-145



## **OBSTETRICS WQ**

Childbirth action QW 300-330

Complications of childbirth WQ 215-260

General and informative publications WQ 1-150

Natural childbirth at home, obstetrics. Prenatal care WQ 152-175

Obstetric surgery WQ 400-450

Pregnancy WQ 200-212

Time after childbirth WQ 500-505



## **OPHTHALMOLOGY WW**

Corrective equipment WW 350-358

Eye WW 101-170

- Anatomy. Physiology. Hygiene WW 101-170
- Diseases. Color perception WW 140-160
- Treatment. Eye banks WW 166-170

Eye refraction. Refractive errors WW 300-320

Eye symptoms. Poor visibility WW 475-480

Informational and general publications WW 1-100

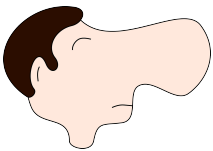
Neuromuscular mechanisms of the eye. Neurological symptoms of eye diseases WW 400-460

Occupational ophthalmology. Eye injuries WW 505-525

Ophthalmology in pediatrics and geriatrics WW 600-620

Optometry WW 704-722.1

The construction of the eye WW 202-290



## **OTOLARYNGOLOGY WV**

Diseases. Treatment WV 140-190

Ear WV 200-290

Informational and general publications WV 1-101

Larynx WV 500-540

Nose and paranasal sinuses WV 300-358

Throat and surroundings WV 400-440



## **PEDIATRICS WS**

Child psychology. Child psychiatry WS 350-350.8

Childcare. Nutrition. Physical examination WS 113-141

Diseases of children and young people WS 200-342

- Diseases in general WS 200-205
- Diseases by systems WS 260-342

Diseases of children and young people by age groups WS 405-460

Growth and development WS 103-105

Informational and general publications WS 1-100

Mental retardation. Learning disorders WS 107-110

Pediatric specialization WS 360-368

Young people psychology. Young people psychiatry WS 462-463



## **PRACTICAL MEDICINE WB**

Diagnostic WB 141-293

- Diagnostic in general WB 141-143
- Medical history. Clinical reports WB 290-293
- Physical diagnosis, physical examination WB 200-288
- Symptoms WB 143-182

Home healthcare. Publications on medicine for non-professionals (general popular publications) WB 120-130

Informational and general publications WB 1-117

Treatment WB 300-962

- Complementary and alternative treatment
- Diet and nutrition WB 400-449
- General treatment WB 300-391

- Medical climatology WB 700-760
- Physiotherapy, physiotherapy and occupational therapy WB 460-555



## **PSYCHIATRY WM**

Disorders associated with the use of addictive and narcotic substances WM 270-290

General and informative publications WM 1-105

Mental disorders. Diagnostics. Behavioral disorders WM 140-165

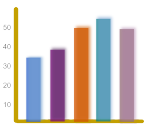
Mental retardation WM 300-308

Neuroses WM 170-197

Other disorders WM 475-611

Psychoses WM 200-220

Treatment WM 400-460.7



## **PUBLIC HEALTH WA**

Administration and organization of health care WA 525-590

Health problem of particular groups of people WA 300-395

Information and general publications WA 1-106

Occupational medicine, health, occupational diseases, safety and hygiene in the work WA 400-495

Preventing accidents and injuries WA 250-295

Preventive medicine WA 108-245

Sanitary conditions. Environmental control WA 670-847

Sanitation and environmental control in general WA 670-672.1

- Air. Noise WA 750-776
- Food WA 695-722



Diseases of the immune system and collagenosis. Hypersensitivity WD 300-375

Disorders and injuries of environmental origin WD 600-670

Eating disorders WD 100-175

Metabolic diseases WD 200-226

- Different types: specific or specific metabolic diseases WD 200. 5-214
- Disorders of water and electrolyte balance WD 220-226
- Metabolic diseases in general WD 200-200.1

Poisonous animals WD 400-430

Poisonous plants WD 500-530



## **THE NERVOUS SYSTEM WL**

Central nervous system. Disturbances. Treatment WL 200-405

Central nervous system (general) WL 200-302

- Brain diseases WL 348-362
- Brain. Feature location WL 307-335
- Brain surgery WL 368-370
- Neurological symptoms WL 340-346
- Epilepsy. Movement disorders WL 385-390
- The spinal cord WL 400-405

Diseases. Examination and diagnosis (general) WL 140-160

Information and general publications WL 1-102

Neurons WL 102.5-102.9

Peripheral nerves WL 500-544

Psychophysiology. Neuroscience WL 103-108

Sense organs WL 700-710

The autonomic nervous system WL 600-610



## **URINARY-GENTILE SYSTEM WJ**

Information and general publications WJ 1-190

Kidneys WJ 300-378

Male genitals WJ 700-875

Ureter. Bladder. Urethra WJ400-600

- Diseases of the urinary system WJ 140-160
- Treatment. Gynecological urology WJ 166-190