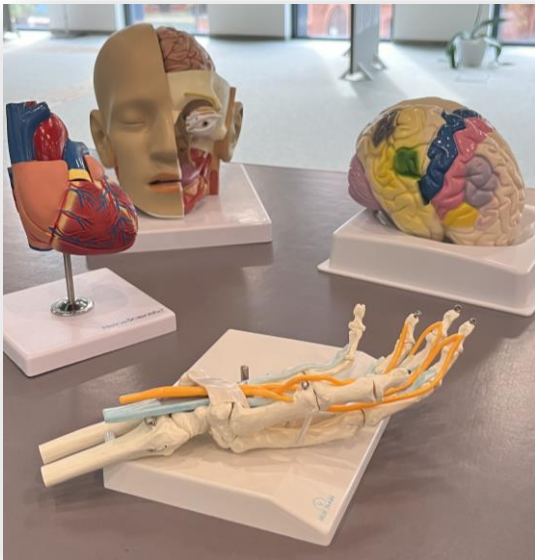


Anatomical models at the WUM Library



In addition to books and journals, the WMU Main Library also has anatomical models available to use in the library as learning aids for students. At the circulation desk on the **1st floor**, we offer:

- 14 skull models,
- 2 heart models,
- 1 foot model with muscles and ligaments,
- 1 hand model,
- 1 brain model with functional areas,
- 1 human torso model which allows for thorough study of internal organs,
- 2 small-sized skeleton models

You can also look up the available models in the catalogue. In order to do that, visit the link: <https://opac.bg.umw.edu.pl/> and search “modele anatomiczne” in the “Subject” field and limit the search query to the “Exhibit items” filter.

In study rooms 205, 206 and 208, full-sized skeleton models are also available, and in room 207, there is a full-sized muscle anatomy model.

The Anatomical Models - Usage Guidelines

In order to access the anatomical models, students should come by the circulation desk on the **1st floor** with their Student's ID and ask for a chosen model. Active library account is required to access the models. The anatomy models can be used up to 3 hours per day and can be only used on site (for example in the study rooms). They cannot be borrowed outside of the library. It is also not possible to make a reservation for the anatomy models in advance.